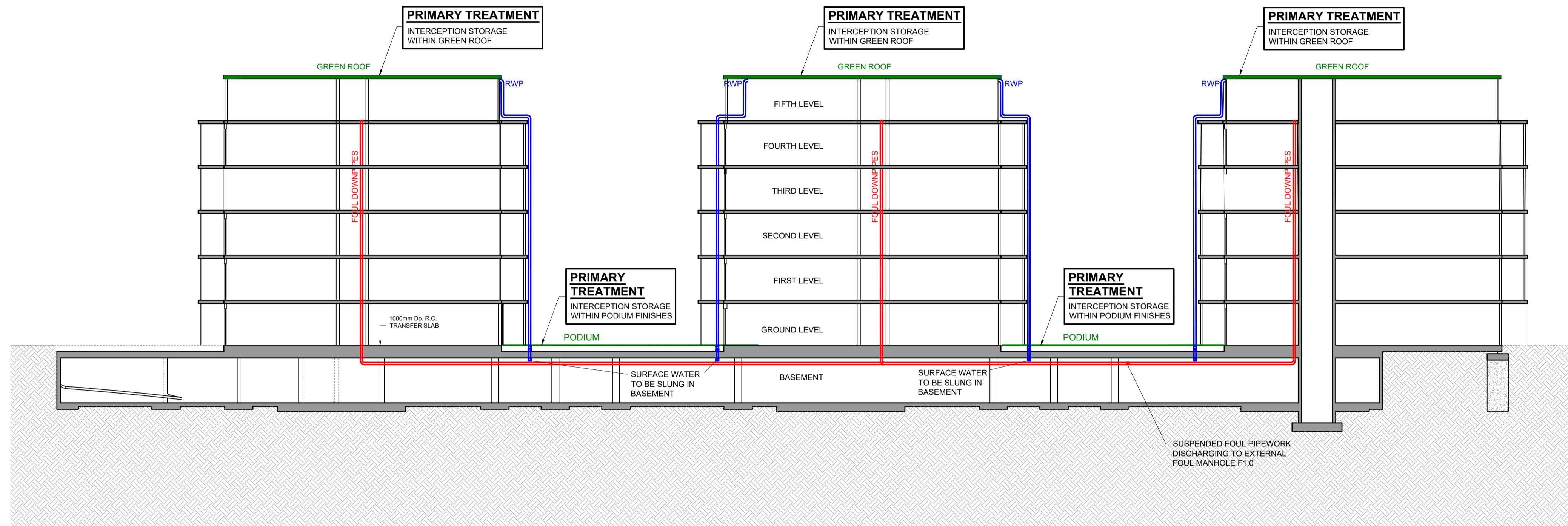
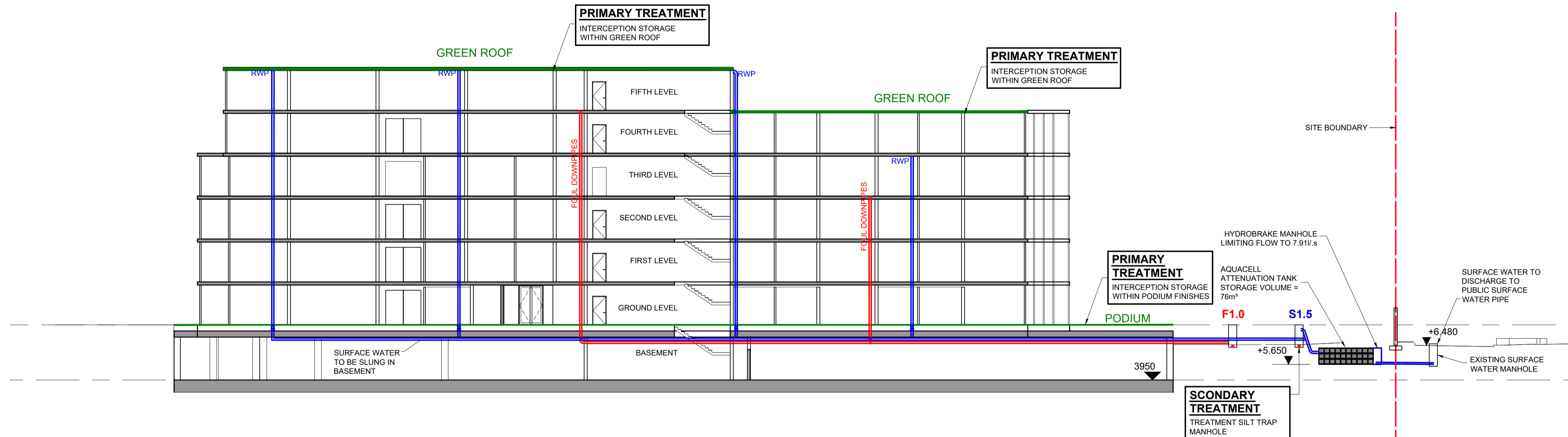


NOTES

1. THIS DRAWING IS TO BE READ IN CONJUNCTION WITH ALL ENGINEERS & ARCHITECTS DRAWINGS FIGURED DIMENSIONS ONLY (NOT SCALING) TO BE USED. WHERE A CONFLICT OF INFORMATION EXISTS OR IF IN ANY DOUBT - 'ASK'.
2. CONSULTANTS TO BE INFORMED IMMEDIATELY OF ANY DISCREPANCIES BEFORE WORK PROCEEDS.



1 SECTION DRAINAGE SCHEMATIC
 C1020 SCALE @ A1: 1:200
 SCALE @ A3: 1:400



2 SECTION DRAINAGE SCHEMATIC
 C1020 SCALE @ A1: 1:200
 SCALE @ A3: 1:400

ISSUE	DATE	DESCRIPTION	DRN	P.E.
P6	20.05.21	ISSUED FOR SHD APPLICATION	BM	SOC
P5	24.06.20	ISSUED FOR PRE-APPLICATION	AT	SOC
P4	15.05.20	ISSUED FOR IW FOR SDA	AT	SOC
P3	14.01.20	PRE-PLANNING ISSUE	AT	SOC
P2	10.12.19	ISSUED FOR COMMENT	AT	SOC
P1	02.12.19	ISSUED FOR COMMENT	AT	SOC

DRAWING STAGE: **PLANNING**

BM Barrett Mahony
 Dublin Office: Sandwith House, 52-54 Lower Sandwith Street, Dublin 2, Ireland. Tel: (01) 677 3200 Fax: (01) 677 3164
 London Office: 12 Mill Street, London SE1 2AY, United Kingdom Tel: (0044) 20 3750 3530
 Consulting Engineers, Civil, Structural, Project Management. E-mail: bmce@bmce.ie Web: www.bmce.ie



CLIENT: **GLL PRS HOLDCO LIMITED**

PROJECT TITLE	BM PROJECT No.
DEVELOPMENT AT HOWTH ROAD	19196
MODEL REFERENCE	MODEL REV. SUITABILITY

DRAWING TITLE: **DRAINAGE SCHEMATIC SECTIONS**

DRAWING No. **HOW-BMD-00-ZZ-DR-C1100** ISSUE **P6**